



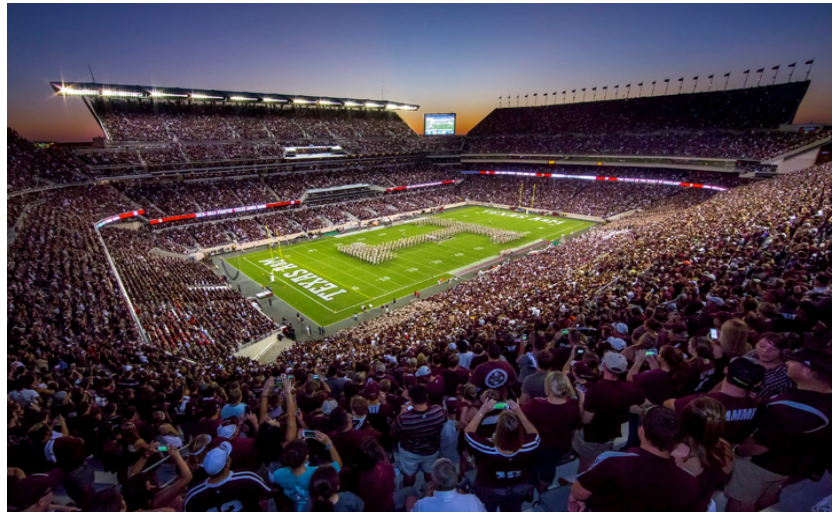
THE STRUCTURAL ENGINEER

Texas A & M – Kyle Field Redevelopment

The Texas A&M Kyle Field Redevelopment is the most extensive redevelopment of a collegiate athletic facility in history, redefining what is possible in sports facility enhancement and serving as the benchmark for future university stadium projects nationwide.

One of the most complex sports projects ever attempted and with one of the most complicated seating bowl structures in the nation, Kyle Field presented the massive design challenges of a significant new sports stadium with the intricate and often unforeseen difficulties of a major renovation.

The engineering work is largely visible to the public with vast column-free spaces, soaring cantilevers, and towering scoreboards. Improvements to fan experience for safety, circulation, and comfort include structural repairs throughout, widened concourses, additional restrooms and concessions, and “cool zones” designed to combat the Texas heat. The project was awarded the Eminent Conceptor in the 2016 American Council of Engineering Companies (ACEC) Engineering Excellence Awards (EEA).



Kyle Field Redevelopment / photo by Christy Radecic



Erin Kueht, P.E. is a senior associate and structural project manager at Walter P Moore. She is an Aggie football season ticket holder for over 12 years and was the junior project manager for the redevelopment project. She has a M.S. and B.S. in Civil Engineering from Texas A&M University.

WHEN:	WHERE:	MEETING INFO COST:	RSVP:	UPCOMING MEETINGS
September 15, 2016 6:00 pm Social 6:30 pm Dinner 9:00 pm Program	Hess Engineering and Scientific Society 5430 Westheimer Houston, TX 77056 (713)627-2283	Members: \$25.00 Non-members: \$35.00 Student members & Non dinner guests \$10.00	Click Here to register online. The deadline is 12:00pm, the Tuesday before	October 20, 2016 TBD November 17, 2016 TBD

[CLICK HERE](#) TO REGISTER FOR THIS MEETING

President's Corner

Tan Tran, PE

Greetings to my fellow Structural Engineers and welcome back from the break of our monthly meetings. This fall, we shipped our second son off to his first year of college at the University of Texas in Austin. It has been a very big change for us and we are still adjusting; though my wife is having a harder time of it than myself. We continually have to face changes in our personal and professional lives and have to adapt and move forwards.

Professionally, the biggest change that I think we are facing is the continuous and resolute "evolution" of the construction industry. I am sure that you are constantly being bombarded by offers to streamline your document management for construction projects. The elimination of having a paper copy of drawings is well underway. You don't see any more hardcopy shop drawing submittals any more, do you? The exchange of PDF sketches and 3-D models for coordination has gained speed and now, are even being slowly replaced by 3D model coordination meetings.

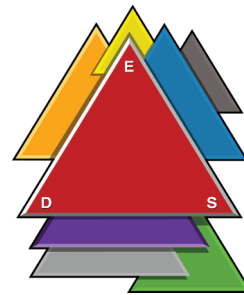
Construction portals for management requests for information (RFIs) and shop drawing submittals are much the norm now. Construction contract documents such as drawings and specifications are mostly distributed electronically. Multiple versions of such documents are efficiently managed and made available from central locations on "the cloud".

Webcams provide continuous viewing of construction sites though they are not yet advanced enough to a point where one can do a remote field visit. For remodeling and retrofitting work we would certainly welcome the availability of 3D data surveys provided by remotely operated unmanned drones.

Epoxy Design Systems, Inc.



IMAGINE ORTHOPEDIC SURGERY FOR CONCRETE STRUCTURES



As specialty trade contractors, established in 1977, we repair, protect and strengthen existing concrete structures in commercial, industrial and marine environments.

Delta Structural Technology, Inc.



**Solutions that
Make the
World
Stronger**

Composite Fiberwrap Contractors & Engineers

Specializing in Structural Repair & Upgrades of Concrete

Structural Upgrades

Corrosion Repair Flood Mitigation

Blast Mitigation Petrochemical

Commercial Crack Injection

Renovations Medical

Industrial Marine

Retrofits Food



Structural Technology, Inc

Repair ▲ Restoration ▲ Strengthening

Ph: 281-821-3006 Fax: 936-539-2118 www.fiberwrap.com

President's Corner (continued)

Tan Tran, PE

3D Building Information Modeling (BIM) has been firmly established in the industry, first gaining traction in design firms and now wholeheartedly expanding to construction firms. The next step would be for owners to realize the immense wealth of information that is available in the BIM models and utilize that data to manage the as-built facilities.

Virtual assisted design is starting to appear on the stage. 3-D printing is making headway into design firms. Experiments involving the use of 3-D printing in construction are in progress. Automated construction equipment is being developed. These changes appear to be based in science fiction, yet they are emerging into our reality. It is enough to make your head spin. Meanwhile, I am still wishing for a program that will allow me to, with the push of a button ... Maybe not.

It is good to be back and I hope to see you all at our monthly meetings!"



Tan Tran, PE
Houston@seaot.org
tan.tran@cardno.com

Leading National Provider for:

- Geotechnical Engineering
- Construction Materials Testing
- Special Inspections
- Industrial Hygiene
- Environmental Consulting & Management
- 70+ Offices Nationwide**

Contact:
Bill Fontenot

3626 Westchase Drive
Houston, TX 77042
P: (713)343-4482
F: (713)977-1915
www.atcgroupservices.com

GEOTECH ENGINEERING AND TESTING

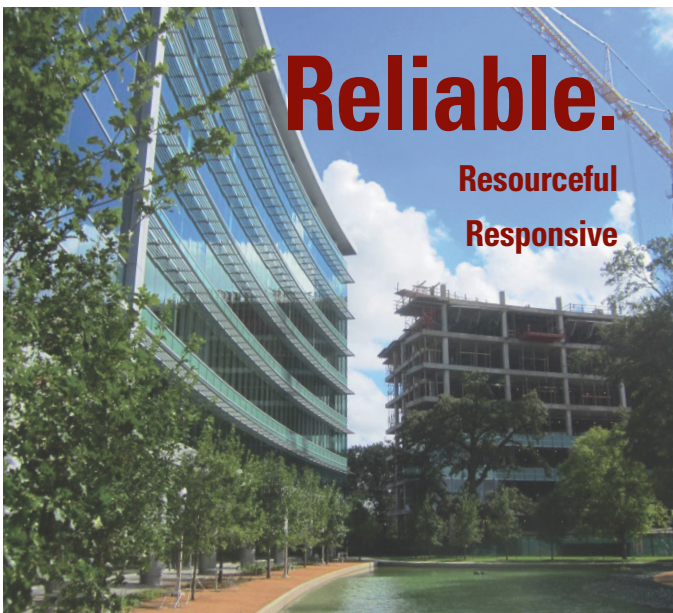
- o *Geotechnical Engineering*
- o *Environmental Engineering*
- o *Construction Materials Engineering*
- o *Forensic Engineering*

Areas of Specialization:

- o *High Rise and Low Rise Buildings*
- o *Land Development*
- o *Petrochemical Complexes*
- o *Chain Store*
- o *Transportation*
- o *Commercial Developments*
- o *Industrial Facilities*
- o *Port and Harbor Facilities*
- o *Aviation*
- o *Public Infrastructure*

Tel: (713) 699-4000 Fax (713) 699-9200
Website: WWW.GEOTECHENG.COM

TEXAS • LOUISIANA • NEW MEXICO • OKLAHOMA
Certified as HUB and DBE



Our top priority – tailor our services to your objectives. We simplify complex issues and provide cost-effective solutions, regardless of the project's size or scope.

Terracon
 14 Offices in Texas
 (713) 690 8989
terracon.com

Environmental Facilities Geotechnical Materials

Secretary's Corner

Chris Hill, PE

I hope everyone had a great summer! I feel like it has been forever since I wrote to you. I hope to see you all at our next meeting as we dive into the fall season and wrap up 2016.

Our last meeting was on June 16th at the HESS club from 6 to 8 pm. Chapter President Tan Tran made general announcements including the re-introduction of the website, noting the need for another young member happy hour and reminding all about the Bring-A-Colleague program. Mr. Tran also mapped out the remaining calendar for 2016 which includes only three more meetings: September 15, October 20th and November 17th.

Chapter member Sherry Mundell with Wood Works introduced several new seminars on heavy timber construction and timber high-rises.

Tolunay-Wong Engineers, Inc.

- Geotechnical Engineering
- Environmental Consulting
- Construction Materials Testing
- Deep Foundations Testing

Houston Office (Headquarters)
 10710 South Sam Houston Parkway West, Suite 100
 Houston, TX 77031
 Phone: 713-722-7064 Fax: 713-722-0319

Contact: Daniel Wong, Ph.D., P.E.
 Email: dwong@tweinc.com

Other Offices
 Beaumont, TX • Corpus Christi, TX • Dallas, TX
 La Porte, TX • Baton Rouge, LA

Visit us at: www.tweinc.com

THE LAW OFFICE OF NICHOLAS SOUZA, PLLC



Attorney Nicholas Souza, LL.M.
 4801 Woodway Drive Suite 300E
 Houston, TX 77056
www.NicholasSouzaLaw.com
Nicholas.Souza@NicholasSouzaLaw.com
 Phone: 713-818-9841
 Fax: 281-885-8620

Trusts & Estates	Tax
<ul style="list-style-type: none"> • Business Succession Planning • Estate & Gift Tax Planning • Wills • Trusts • Estate Administration (Probate) 	<ul style="list-style-type: none"> • Individuals • Businesses • Tax Planning • Tax Controversies • Federal, State, & Local

Nicholas Souza is responsible for all content in this advertisement.

One Company, One Call.

PSI is your best choice for full-service engineering, testing and environmental services. Our experienced staff of professionals has the expertise to meet your project requirements.

- Geotechnical Engineering
- Construction Materials Testing & Engineering
- Non-Destructive Services
- Environmental Consulting
- Industrial Hygiene Services
- Facilities & Roof Consulting
- Specialty Engineering & Testing

psi Information
To Build On
Engineering • Consulting • Testing

Texas Office Locations:

Austin • Clute • Corpus Christi • El Paso • Ft. Worth
Harker Heights • Harlingen • Houston • La Porte • Longview
McKinney • San Antonio • Spring • Victoria

800.548.7901

www.psiusa.com e-mail: info@psiusa.com

Secretary's Corner (continued)

Chris Hill, PE

Vice President Rick Miles then introduced the speaker for the evening, Mr. Adam Smith. Mr. Smith with USG presented on structural noncombustible fiber-reinforced cementitious sheathing panels. The benefits, structural systems, properties and project types were highlighted.

Until next time,

Chris

We create the software
that helps you create everything else.

IRISA

DESIGN TOOLS FOR STRUCTURAL ENGINEERING
risa.com

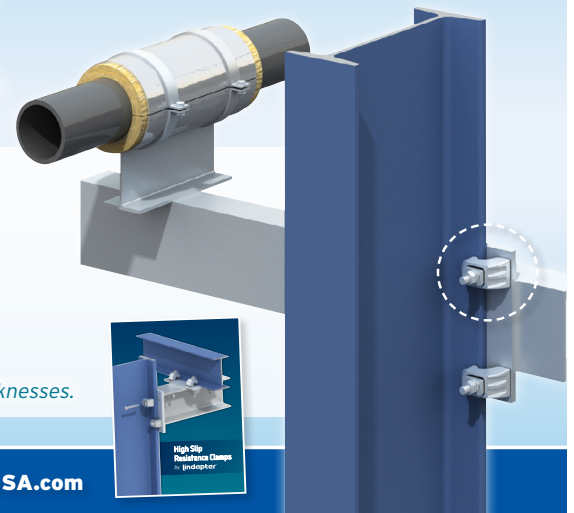
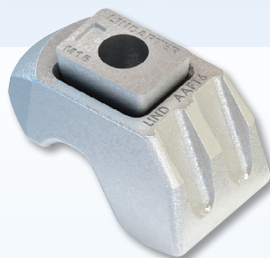
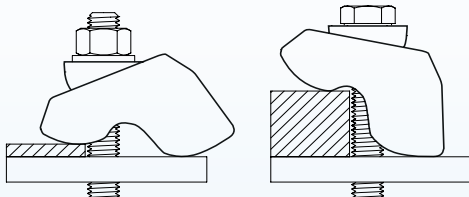


Type AAF Girder Clamp

NEW PRODUCT

- ✓ No drilling or welding required
- ✓ Faster installation and reduced costs
- ✓ High slip resistance capacities
- ✓ Independently approved Safe Working Loads
- ✓ Low temperature SG iron

This unique 'all-in-one' adjustable steel clamp offers high slip resistance capability, ease of installation, anti-corrosion protection and performance, even in low temperature environments.



► Innovative 2-part design allows clamp to self-adjust to suit a range of flange thicknesses.

Get the new brochure at www.LindapterUSA.com or inquiries@LindapterUSA.com

lindapter
USA



2016 Officers and Directors

<u>Office</u>	<u>Name</u>	<u>Phone</u>	<u>E-mail (click to send)</u>
President	Tan Tran	713.868.1591	tan.tran@cardno.com
Vice President	Rick Miles	713.630.7414	RMiles@walterpmoore.com
Secretary	Chris Hill	713.868.1591	chris.hill@cardno.com
Treasurer	Jonathan Warshaw	832.467.2177	Jonathan.Warshaw@walkerrestoration.com
Past President	Al Bustamante	832.467.2177	Al.Bustamante@walkerrestoration.com
Chapter Director (15-16)	Al Bustamante	832.467.2177	Al.Bustamante@walkerrestoration.com
Chapter Director (16-17)	Steve Wilkerson	832.969.8641	stevew@ziasoftware.com
State Director (15-16)	Bob Lanser	281.543.0305	boblanser@aol.com
Alternate State Director	Joe Kallaby	281.584.9300	osi-jk@swbell.net

2016 Committee Chairpersons

<u>Committee</u>	<u>Chair</u>	<u>Phone</u>	<u>E-mail (click to send)</u>
Advisory	Jaynool Khayrattee	713.664.0130	jayk@matrixstructural.com
Scholarship	Paul Gugenheim	832.309.5584	paul@fiberwrap.com
Membership Program	OPEN POSITION		
Student Affairs– TAMU	Stefan Hurlebaus	979.845.9570	shurlebaus@civil.tamu.edu
Student Affairs– Rice U.	Jamie Padgett	713.348.2325	Jamie.Padgett@rice.edu
Student Affairs– U of H	Mina Dawood	713.743.2983	nmdawood@uh.edu
Publicity	Lance Operhall		operhall@gmail.com
Young Engineers	Chris Hill	713.868.1591	chris.hill@cardno.com
Advertising	Lis Stansfeld	512.301.2744	lizstansfeld@earthlink.net
Newsletter Editor	Jennifer Ju	713.868.1591	jennifer.ju@cardno.com
TAMU Student Ch. Pres.	Natasha Boger		ncboger@tamu.edu
Webmaster	Stacy Chu		schu@ensightinc.com