



THE STRUCTURAL ENGINEER

Use of Void Forms for Isolation of the Structural Foundation from the Effects of Expansive Soil

VoidForm Products, Inc. is North America's leading manufacturer of void forming products, most notable of which is SureVoid. Started in 1980, it produces over 50 million square feet of carton forms annually. With 6 plants located in the United States and Canada, VoidForm Products, Inc. services the construction industries most demanding needs in void forming.

SureVoid is a sacrificial paper carton form that provides a cost effective, repeatable way to correctly isolate structural concrete from the effects of expansive soil. This system makes available a void space free of potential transfer from the heaving, damaging effects of expansive soils. This product is diverse in its offerings and designs to meet both the design professional's needs as well as that of the installation crew.

Continuously innovating, VoidForm Products, Inc. offers void forms for jobsites where moisture would prematurely affect paper cartons. When the proper design elements are taken into consideration, this product allows construction to continue during adverse weather conditions where previously this has not been possible. Another innovative product protects plumbing installed below the slab from the effects of expansive soils. While this problem is often overlooked or difficult to manage, these products protect plumbing and simplify the installation.

Michael Turner, owner of VoidForm Products, Inc. has been involved in construction and concrete related work his entire professional career. Mr. Turner is responsible for many of the innovations and designs used in void forming today. This firsthand knowledge and involvement over a significant period of time makes Mr. Turner an undeniable expert in the world of void forming.



MEETING INFO

WHEN:	WHERE:	COST:	RSVP:	UPCOMING MEETINGS
April 16, 2015 6:00 pm Social 6:30 pm Dinner 7:00 pm Program	HESS Engineering and Scientific Society 5430 Westheimer Houston, TX 77056 713.627.2283	Members: \$25.00 Non-members: \$35.00 Student members & Non dinner guests \$10.00	Click Here to register online. The deadline is 12:00pm, the Tuesday before	May 21, 2015 TBD June 18, 2015 TBD

[CLICK HERE](#) TO REGISTER FOR THIS MEETING

President's Corner

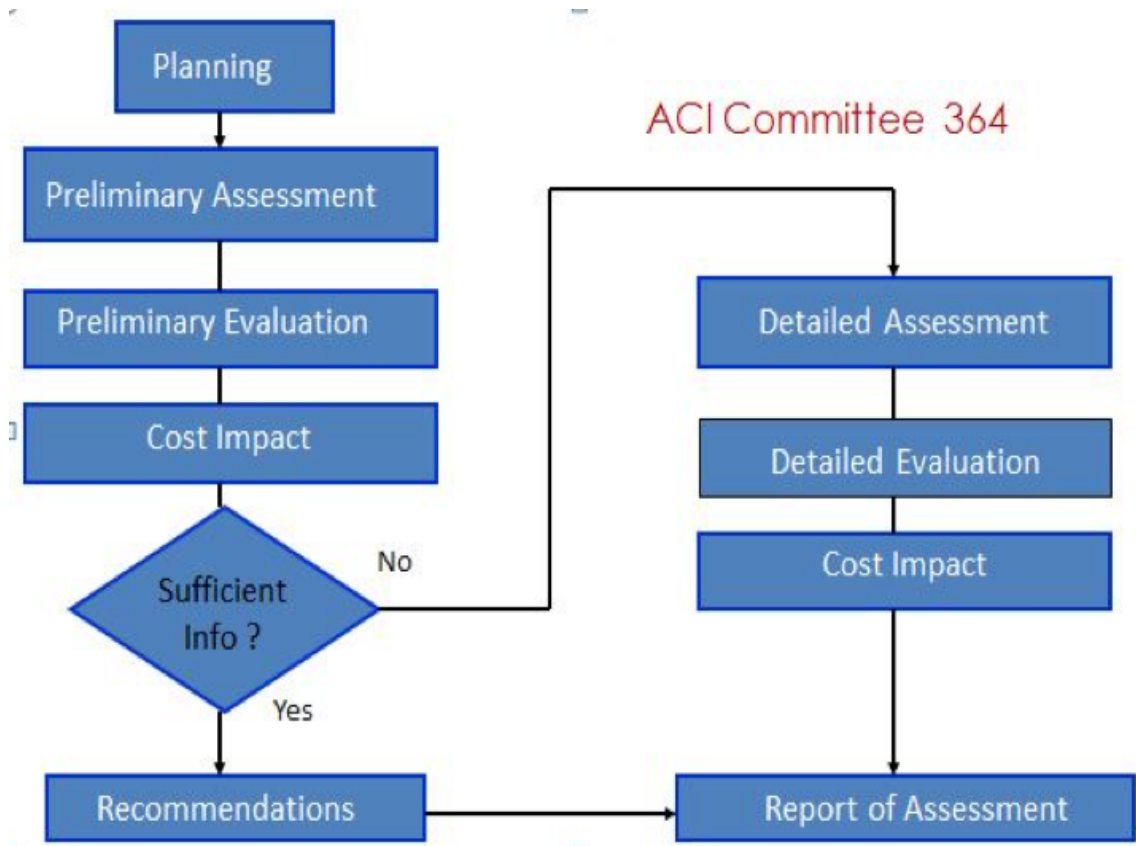
Al Bustamante, PE

Most structural engineers are very aware of opportunities and the type of work associated with design of new structures. Restoration engineering for buildings and other structures is a practice area of structural engineering often overlooked as a career path. Restoration provides a dynamic work environment where professionals get the opportunity to perform hands on field observations and testing in addition to analysis and design. One of the most important aspects of restoration engineering is forensic investigation. Now, what is forensics? It is The art or study of argumentation and formal debate. As a legal term, forensics pertains to, connected with, or used in courts of law or public discussion and debate.

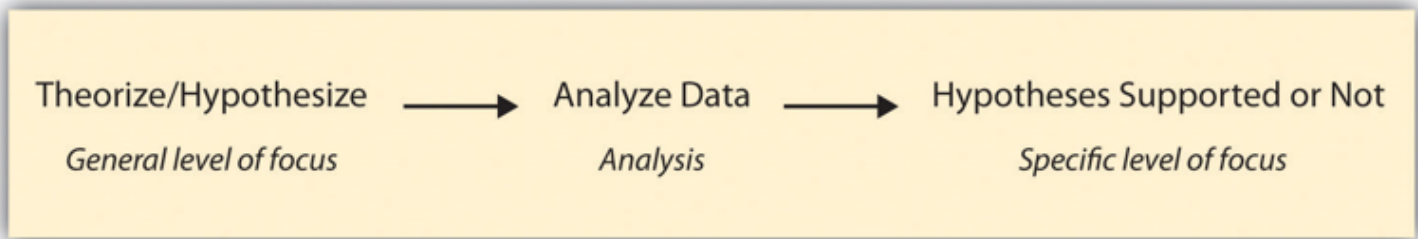
So, why is forensic investigation required for restoration engineering? There are two main reasons:

- To offer the right remedial actions
- Provide cost-effective solutions

A forensic investigation process consists of the following:



There are two types of investigation approaches: inductive and deductive methods. Deductive method consists of formulating an theory or hypothesis, analyze the data, and determine if the hypothesis is supported or not as shown below:



Inductive method consists of gathering data, look for patterns, and develop a theory as shown below:



The tools used for forensic investigation includes visual examination, non-destructive testing, material sampling and testing, structural analysis, etc.

We have several members of our chapter that perform restoration services. I would encourage you to reach out to these folks if you are interested in knowing more about restoration engineering as a career path.

As always, I encourage everyone to participate in our chapter in order to continue to grow our organization. As president of the chapter I speak for all board members that our goal is to leave the chapter in a better position that it was before our tenure. If you have any input or have any questions about our chapter, please don't hesitate contacting me at houston@seaot.org



Al Bustamante, PE
al.bustamante@walkerrestoration.com

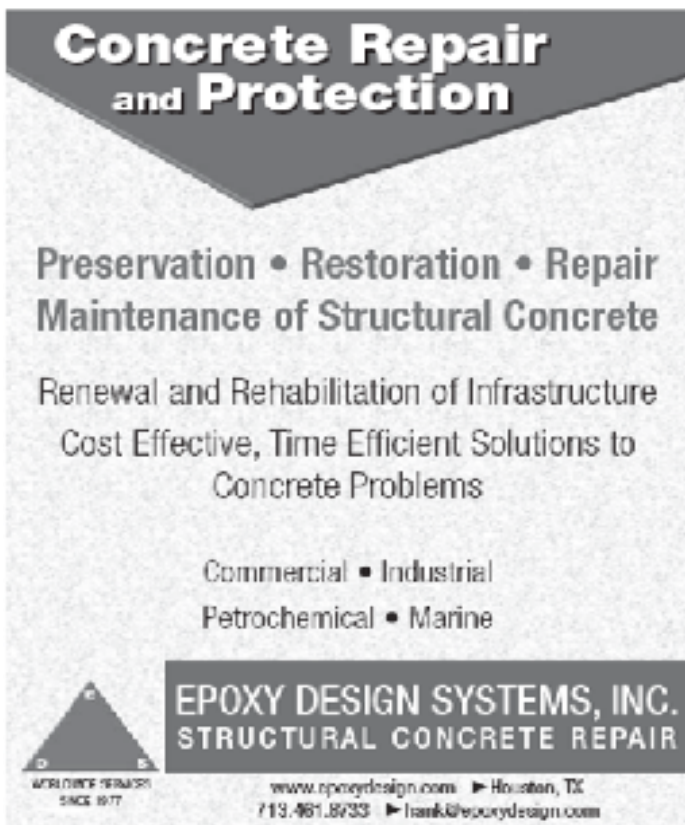
Secretary's Corner

Rick Miles, PE

We're already halfway through April and if you're like me, you're wondering where March went and how am I going to get all this stuff done? Why not take a break and head to the SEAOt meeting to commiserate with your fellow engineers.

Expect the push for SEAOt State Conference volunteers to pick up in the immediate future. Contact a board member if you are interested in participating. Speakers are in the process of being lined up and the schedule should be released soon.

Our March 19 meeting had a solid turnout. Cardno Haynes Whaley was the meeting sponsor and Vice President Tan Tran gave us an overview of Cardno. While most of us are familiar with Haynes Whaley, when they joined Cardno in late 2013 they became part of a global infrastructure and environmental services company with over 8,000 employees working on projects in more than 85 countries. Thank you, Cardno, for the meeting sponsorship, and please visit <http://www.cardno.com/> to learn more about Cardno's extensive reach and scope of services.



**Concrete Repair
and Protection**

Preservation • Restoration • Repair
Maintenance of Structural Concrete

Renewal and Rehabilitation of Infrastructure
Cost Effective, Time Efficient Solutions to
Concrete Problems

Commercial • Industrial
Petrochemical • Marine

EPOXY DESIGN SYSTEMS, INC.
STRUCTURAL CONCRETE REPAIR

APPLIED REPAIRS SINCE 1977

www.epoxydesign.com Houston, TX
713.461.8733 frank@epoxydesign.com



Delta Structural Technology, Inc.

**Solutions that
Make the
World
Stronger**

Composite Fiberwrap Contractors & Engineers

Specializing in Structural Repair & Upgrades of Concrete

Structural Upgrades

Corrosion Repair Flood Mitigation
Blast Mitigation Petrochemical
Commercial Crack Injection
Renovations **DELTA** Medical
Industrial Marine
Retrofits **Structural Technology, Inc** Food

Repair ▲ Restoration ▲ Strengthening

Ph: 281-821-3006 Fax: 936-539-2118 www.fiberwrap.com

Secretary's Corner (Continued)

Rick Miles, PE


Rick Valdez, an investigator with the Texas Board of Professional Engineers, provided an excellent presentation summarizing the role of the TBPE, not only from the perspective of the practicing engineer but also public perception issues. The presentation satisfied the one-hour ethics requirement, but Rick reminded us that TBPE offers quarterly webinars that also satisfy the requirement. Be sure to bookmark <http://engineers.texas.gov/webinars.html> and visit frequently to stay updated on these offerings.

We understand that there has been an issue with the delivery of PDH certificates from the March seminar, and we are working to resolve this issue as soon as possible.



WWW.STRONGTIE.COM

- Adhesive and Mechanical Anchors
- Direct Fastening Systems
- Repair, Protection and Strengthening Products
- Cold-Formed Steel Connectors
- Lateral Systems
- Fasteners
- Wood Construction Connectors



Providing a wide range of construction solutions for your Infrastructure, Commercial and Industrial applications



Anchor Designer™ Software
for ACI 318, ETAG, and CSA
Version 2.3



CFS Designer™ Software
for AISI
Version 1.1.0

Simpson Strong-Tie® Anchor Designer™ Software is the latest anchorage design tool for structural engineers to satisfy the strength design provisions of ACI 318 Appendix D, CAN/CSA A23.3 Annex D, ETAG 001 Annex C or EOTA TR029 design methodologies.
NEW FEM —PLATE THICKNESS CALCULATOR
Chad Eades
(512) 992-8494
CEades@strongtie.com
Technical Representative

Simpson Strong-Tie® CFS Designer™ gives cold-formed steel Designers the ability to design CFS stud and track members according to AISI specifications and to analyze complex beam loading and span conditions through an intuitive user interface. The program allows the design of multiple systems within the same job file, and supports connection design for specific Simpson Strong-Tie® curtain wall and bridging connectors.

Type AAF Girder Clamp

NEW PRODUCT

- ✓ No drilling or welding required
- ✓ Faster installation and reduced costs
- ✓ High slip resistance capacities
- ✓ Independently approved Safe Working Loads
- ✓ Low temperature SG iron



This unique 'all-in-one' adjustable steel clamp offers high slip resistance capability, ease of installation, anti-corrosion protection and performance, even in low temperature environments.






▶ Innovative 2-part design allows clamp to self-adjust to suit a range of flange thicknesses.

Get the new brochure at www.LindapterUSA.com or inquiries@LindapterUSA.com

Secretary's Corner (Continued)

Rick Miles, PE

Do you have a technical article you'd like to share? Please pass on your information to me, and we will work with the publisher to include it with a future newsletter.

Finally, another plug to encourage you to join the chapter LinkedIn Group. LinkedIn has become a significant resource for the A/E/C community and we hope to build the chapter presence. If you're a LinkedIn member, please search for the group Structural Engineers Association of Texas - Houston / Gulf Coast Chapter and join so that our updates will show up in your feed.

Thanks for your participation and see you in April!

Rick Miles

GEOTECH ENGINEERING AND TESTING

- o *Geotechnical Engineering*
- o *Environmental Engineering*
- o *Construction Materials Engineering*
- o *Forensic Engineering*

Areas of Specialization:

- o *High Rise and Low Rise Buildings*
- o *Land Development*
- o *Petrochemical Complexes*
- o *Chain Store*
- o *Transportation*
- o *Commercial Developments*
- o *Industrial Facilities*
- o *Port and Harbor Facilities*
- o *Aviation*
- o *Public Infrastructure*

Tel: (713) 699-4000

Fax (713) 699-9200

Website: WWW.GEOTECHENG.COM

TEXAS • LOUISIANA • NEW MEXICO • OKLAHOMA
Certified as HUB and DBE





Reliable.

**Resourceful
Responsive**

Our top priority – tailor our services to your objectives. We simplify complex issues and provide cost-effective solutions, regardless of the project's size or scope.

Terracon
14 Offices in Texas
(713) 690 8989
terracon.com

Environmental Facilities Geotechnical Materials

*One Company,
One Call.*

PSI is your best choice for full-service engineering, testing and environmental services. Our experienced staff of professionals has the expertise to meet your project requirements.

- Geotechnical Engineering
- Construction Materials Testing & Engineering
- Non-Destructive Services
- Environmental Consulting
- Industrial Hygiene Services
- Facilities & Roof Consulting
- Specialty Engineering & Testing

psi Information
To Build On
Engineering • Consulting • Testing

Texas Office Locations:

Austin • Clute • Corpus Christi • El Paso • Ft. Worth
Harker Heights • Harlingen • Houston • La Porte • Longview
McKinney • San Antonio • Spring • Victoria

800.548.7901

www.psiusa.com e-mail: info@psiusa.com

We create the software
that helps you create everything else.

RISA

DESIGN TOOLS FOR STRUCTURAL ENGINEERING
risa.com



Landing National Provider for:

Geotechnical Engineering
Construction Materials Testing
Special Inspections
Industrial Hygiene
Environmental Consulting & Management
24+ Offices Nationwide

Contact:
Marlana Moreno

3660 Westcham Drive
Houston, TX 77042
P: (713) 663-4482
F: (713) 677-1815
www.cardno.com
www.atc.com



Tolunay-Wong Engineers, Inc.

- Geotechnical Engineering
- Environmental Consulting
- Construction Materials Testing
- Deep Foundations Testing

Houston Office (Headquarters)

10710 South Sam Houston Parkway West, Suite 100
Houston, TX 77031

Phone: 713-722-7064 Fax: 713-722-0319

Contact: Daniel Wong, Ph.D., P.E.

Email: d Wong@tweinc.com

Other Offices

Beaumont, TX • Corpus Christi, TX • Dallas, TX
La Porte, TX • Baton Rouge, LA

Visit us at: www.tweinc.com

2015 Officers and Directors

<u>Office</u>	<u>Name</u>	<u>Phone</u>	<u>E-mail (click to send)</u>
President	Al Bustamante	832.467.2177	Al.Bustamante@walkerrestoration.com
Vice President	Tan Tran	713.868.1591	tan.tran@cardno.com
Secretary	Rick Miles	713.630.7414	RMiles@walterpmoore.com
Treasurer	Jonathan Warshaw	832.467.2177	jwarshaw18@gmail.com
Past President	Steve Wilkerson	832.969.8641	steveuw@ziasoftware.com
Chapter Director (14-15)	Larry Ickert	832.244.5403	lickert@excelmidstream.com
Chapter Director (15-16)	Steve Wilkerson	832.969.8641	steveuw@ziasoftware.com
State Director (14-15)	Damon Brotherton	713.702.9973	d-brotherton@sbcglobal.net
State Director (15-16)	Bob Lanser	281.543.0305	boblanser@aol.com
Alternate State Director	Joe Kallaby	281.584.9300	osi-jk@swbell.net

2015 Committee Chairpersons

<u>Committee</u>	<u>Chair</u>	<u>Phone</u>	<u>E-mail (click to send)</u>
Advisory	Jaynool Khayrattee	713.664.0130	jayk@matrixstructural.com
Scholarship	Paul Gugenheim	832.309.5584	paul@fiberwrap.com
Membership	Glen Smith	713.664.0130	glensmith@gmail.com
Program			
Student Affairs– TAMU	Stefan Hurlebaus	979.845.9570	shurlebaus@civil.tamu.edu
Student Affairs– Rice U.	Jamie Padgett	713.348.2325	Jamie.Padgett@rice.edu
Student Affairs– U of H	Mina Dawood	713.743.2983	nmdawood@uh.edu
Publicity	Lance Operhall		operhall@gmail.com
Young Engineers	Chris Hill	713.868.1591	chris.hill@cardno.com
Advertising	Chris Hill	713.868.1591	chris.hill@cardno.com
Newsletter Editor	Jennifer Ju	713.868.1591	jennifer.ju@cardno.com
TAMU Student Ch. Pres.	Alejandro Zepeda	979.574.7794	alejandro_zepeda@email.tamu.edu

