



THE STRUCTURAL ENGINEER

Foundation Features

Tall Buildings and Braced Excavations in Houston and The Foundation Engineering Disconnect

Braced excavation and foundation systems of tall buildings in the Houston Area are presented through a case study of the recently completed B G Group Place, Houston's tallest building to start the 21st millennium. The building is considered one of the tallest soil-supported buildings in the world at 48 stories from basement to top when compared to the 75 story Chase Tower. The presentation is expanded by performance information from other local braced excavation projects (Ulrich, 1989) in the Texas Gulf Coast to capture the broad character of excavation behavior. Properly designed and built Houston Area excavations enjoy behavior characteristics unique to those reported in other locations.

Success prevails with foundation engineering which is a solid collaboration between the Structural and Geotechnical Engineer or the Foundation Engineer serves as master of the collaboration.

Ed Ulrich graduated from Georgia Tech in 1969 with a Bachelor of Civil Engineering with concentrations in George Sowers Foundations, structures, and surveying, but he began his career in 1967 as a part time field engineer in Atlanta foundation projects to pay future wedding bills. After one year as a Construction Engineer he entered the University of Illinois at Urbana-Champaign in 1970 to study under Ralph Peck. Upon graduating with an MSCE, he returned to Atlanta for another year, and then crossed the Sabine in 1972 to join McClelland Engineers. By 1980 he became chief engineer for tall buildings and braced excavations and started Ulrich Engineers in 1984.

Mr. Ulrich's experience extends over four continents offshore and onshore. He served as the Committee Chair of ACI's Foundation Committee for almost 15 years leading industry experts in modernizing foundation standards and has produced nearly 100 written and oral presentations. ASCE has awarded Mr. Ulrich the Thomas A. Middlebrooks Award, Harry S Schnabel Award. ADSC gave Mr. Ulrich the President's Award and named his paper "Drilled Piers Succeed with the Deepest Excavation in the Texas Medical Center" their 2011 May Feature Article. He has given invitational lectures to the Illinois and Louisiana Section ASCE State meetings.

SPONSORED BY



MEETING INFO

WHEN:	WHERE:	COST:	RSVP:	UPCOMING MEETINGS
February 19, 2015 6:00 pm Social 6:30 pm Dinner 7:00 pm Program	HESS Engineering and Scientific Society 5430 Westheimer Houston, TX 77056 713.627.2283	Members: \$25.00 Non-members: \$35.00 Student members & Non dinner guests \$10.00	Click Here to register online. The deadline is 12:00pm, the Tuesday before	March 19, 2015 TBD April 16, 2015 TBD

[CLICK HERE](#) TO REGISTER FOR THIS MEETING

President's Corner

Al Bustamante, PE

There is a saying in sports "it's not how you start what matters; it's how you finish". In other words, the outcome of the competitive event is what matters. For our chapter, it's not the start or the finish alone; the start the middle and the finish matters. We got off to an excellent start to the year with a great attendance to our January meeting despite terrible weather and even worse traffic the date of our meeting. We strive to provide quality programs and sponsors for our members and non-members every month and we will continue to do that for every single meeting.

It was great to see how many members showed interest in helping with the efforts in connection with the organization of the 2015 State Conference to be held in Houston, Texas October 22 and 23, 2015 at the Houston Hilton North located within ten miles of George Bush International Airport. Our past president Steve Wilkerson is leading the efforts in connection with the State Conference. Please reach out to Steve at swilkerson@apexstrucengg.com to offer your assistance.

We also welcome your suggestions regarding programs for the State Conference or any other business of our chapter. I have received several questions regarding how to apply for membership and membership benefits.

Please contact Glen Smith at Glen.Smith@ptcforensics.com for any questions regarding membership.

I also want to take this opportunity to inform you that in addition to our monthly meetings, we are planning special sponsored presentations/education programs to be held during the lunch hour. These events are typically free to our members and a free meal (as well as continued education) are provided. We want to provide our members different options for continued education through our chapter. Additional information regarding upcoming special education programs will be announced during our monthly meetings – stay tuned.

If you are interested in volunteering, please feel free to contact any of the officers listed at the end of the newsletter.

Al Bustamante, PE
houston@seaot.org
al.bustamante@walkerrestoration.com





**Concrete Repair
and Protection**

Preservation • Restoration • Repair
Maintenance of Structural Concrete

Renewal and Rehabilitation of Infrastructure
Cost Effective, Time Efficient Solutions to
Concrete Problems

Commercial • Industrial
Petrochemical • Marine

EPOXY DESIGN SYSTEMS, INC.
STRUCTURAL CONCRETE REPAIR

Delta Structural Technology, Inc.



**Solutions that
Make the
World
Stronger**

Composite Fiberwrap Contractors & Engineers
Specializing in Structural Repair & Upgrades of Concrete

Structural Upgrades

Corrosion Repair	Flood Mitigation
Blast Mitigation	Petrochemical
Commercial	Crack Injection
Renovations	Medical
Industrial	Marine
Retrofits	Food

DELTA
Structural Technology, Inc

Repair ▲ Restoration ▲ Strengthening

Ph: 281-821-3006 Fax: 936-539-2118 www.fiberwrap.com

Secretary's Corner

Rick Miles, PE

2015 is underway and promises to be a busy year for the SEAOt Houston/Gulf Coast Chapter. As host chapter for the SEAOt State Conference this year, there are plenty of volunteer roles that will need to be filled. Mark your calendars for October 22-23, 2015 and plan on attending - and please consider helping out with the numerous tasks required to make the event a success.

Also, the 84th Texas Legislature is underway and we are keeping tabs on several items of interest to structural engineers, including licensure issues. Coming to the meetings is the best way to stay on top of these and other topics.

We kicked off the year with our January 22 meeting. We were pleased to be joined by a large group from the Texas A&M Student Chapter. The meeting sponsor was Walker Restoration Consultants and its parent company Walker Parking Consultants.

Our Chapter president Al Bustamante now heads the Houston Walker Restoration team and provided a brief summary of Walker Restoration's service options, including assessment and investigation of existing structures, repair design, and asset management.

Al was joined by James Brooks, PE, LEED AP of Walker Parking Consultants, who provided an overview of their services including functional parking studies, parking design, and management systems. You can learn more about Walker Restoration and Walker Parking by visiting walkerrestoration.com and walkerparking.com

Al was also our speaker for the meeting, presenting on the topic of "Tackling Travertine Cladding Repairs". It was an interesting case study of two local projects; Jones Hall and Capitol One Plaza. An overview of basic material properties, design considerations, and investigative techniques was complemented with insight into the various failure conditions that were encountered, the restoration approach, and implementation of repairs. Thank you, Al, for providing another interesting and informative presentation.

Type AAF Girder Clamp

NEW PRODUCT

- ✓ No drilling or welding required
- ✓ Faster installation and reduced costs
- ✓ High slip resistance capacities
- ✓ Independently approved Safe Working Loads
- ✓ Low temperature SG iron



This unique 'all-in-one' adjustable steel clamp offers high slip resistance capability, ease of installation, anti-corrosion protection and performance, even in low temperature environments.









▶ Innovative 2-part design allows clamp to self-adjust to suit a range of flange thicknesses.

Get the new brochure at www.LindapterUSA.com or inquiries@LindapterUSA.com



Secretary's Corner (Continued)

Rick Miles, PE

We already have some excellent speakers and interesting topics lined up this year. Following the venerable Ed Ulrich this month, we are planning on an Ethics presentation in March (just in time for you March renewals) and a presentation on expansive soils / carton forms in April. We are always open to suggestions for topics and speakers; feel free to contact a board member.

Thanks for your participation and see you at the February meeting!

Rick Miles



GEOTECH ENGINEERING AND TESTING

- o Geotechnical Engineering
- o Environmental Engineering
- o Construction Materials Engineering
- o Forensic Engineering

Areas of Specialization:

- | | |
|------------------------------------|------------------------------|
| o High Rise and Low Rise Buildings | o Commercial Developments |
| o Land Development | o Industrial Facilities |
| o Petrochemical Complexes | o Port and Harbor Facilities |
| o Chain Store | o Aviation |
| o Transportation | o Public Infrastructure |

Tel: (713) 699-4000

Fax (713) 699-9200

Website: **WWW.GEOTECHENG.COM**

TEXAS • LOUISIANA • NEW MEXICO • OKLAHOMA

Certified as HUB and DBE

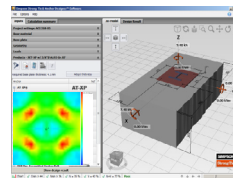


WWW.STRONGTIE.COM

- Adhesive and Mechanical Anchors
- Direct Fastening Systems
- Repair, Protection and Strengthening Products
- Cold-Formed Steel Connectors
- Lateral Systems
- Fasteners
- Wood Construction Connectors



Providing a wide range of construction solutions for your Infrastructure, Commercial and Industrial applications



Anchor Designer™ Software
for ACI 318, ETAG, and CSA
Version 2.3

Simpson Strong-Tie® Anchor Designer™ Software is the latest anchorage design tool for structural engineers to satisfy the strength design provisions of ACI 318 Appendix D, CAN/CSA A23.3 Annex D, ETAG 001 Annex C or EOTA TR029 design methodologies.

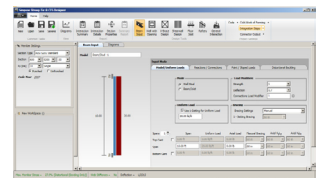
***NEW FEM — PLATE THICKNESS CALCULATOR ***

Chad Eades

(512) 992-8494

CEades@strongtie.com

Technical Representative



CFS Designer™ Software
for AISI
Version 1.1.0

Simpson Strong-Tie® CFS Designer™ gives cold-formed steel Designers the ability to design CFS stud and track members according to AISI specifications and to analyze complex beam loading and span conditions through an intuitive user interface. The program allows the design of multiple systems within the same job file, and supports connection design for specific Simpson Strong-Tie® curtain wall and bridging connectors.



Our top priority – tailor our services to your objectives. We simplify complex issues and provide cost-effective solutions, regardless of the project's size or scope.

Terracon
14 Offices in Texas
(713) 690 8989
terracon.com

Environmental Facilities Geotechnical Materials

We create the software that helps you create everything else.

RISA
DESIGN TOOLS FOR STRUCTURAL ENGINEERING
risa.com

Leading National Provider for:

- Geotechnical Engineering
- Construction Materials Testing
- Special Inspections
- Industrial Hygiene
- Environmental Consulting & Management
- 24+ Offices Nationwide

Contact:
Mariana Moreno
3660 Westcham Drive
Houston, TX 77042
P: (713) 663-4482
F: (713) 677-1815
www.cardno.com
www.atc.com

One Company, One Call.

PSI is your best choice for full-service engineering, testing and environmental services. Our experienced staff of professionals has the expertise to meet your project requirements.

- Geotechnical Engineering
- Construction Materials Testing & Engineering
- Non-Destructive Services
- Environmental Consulting
- Industrial Hygiene Services
- Facilities & Roof Consulting
- Specialty Engineering & Testing

Information To Build On
Engineering • Consulting • Testing

Texas Office Locations:
Austin • Clute • Corpus Christi • El Paso • Ft. Worth
Harker Heights • Harlingen • Houston • La Porte • Longview
McKinney • San Antonio • Spring • Victoria

800.548.7901
www.psiusa.com e-mail: info@psiusa.com

Tolunay-Wong Engineers, Inc.

- Geotechnical Engineering
- Environmental Consulting
- Construction Materials Testing
- Deep Foundations Testing

Houston Office (Headquarters)
10710 South Sam Houston Parkway West, Suite 100
Houston, TX 77031
Phone: 713-722-7064 Fax: 713-722-0319

Contact: Daniel Wong, Ph.D., P.E.
Email: d Wong@tweinc.com

Other Offices
Beaumont, TX • Corpus Christi, TX • Dallas, TX
La Porte, TX • Baton Rouge, LA

Visit us at: www.tweinc.com

2015 Officers and Directors

<u>Office</u>	<u>Name</u>	<u>Phone</u>	<u>E-mail (click to send)</u>
President	Al Bustamante	832.467.2177	Al.Bustamante@walkerrestoration.com
Vice President	Tan Tran	713.868.1591	tan.tran@cardno.com
Secretary	Rick Miles	713.630.7414	RMiles@walterpmoore.com
Treasurer	Jonathan Warshaw	832.467.2177	jwarshaw@wje.com
Past President	Steve Wilkerson	832.969.8641	steveuw@ziasoftware.com
Chapter Director (14-15)	Larry Ickert	832.244.5403	lickert@excelmidstream.com
Chapter Director (15-16)	Steve Wilkerson	832.969.8641	steveuw@ziasoftware.com
State Director (14-15)	Damon Brotherton	713.702.9973	d-brotherton@sbcglobal.net
State Director (15-16)	Bob Lanser	281.543.0305	boblanser@aol.com
Alternate State Director	Joe Kallaby	281.584.9300	osi-jk@swbell.net

2015 Committee Chairpersons

<u>Committee</u>	<u>Chair</u>	<u>Phone</u>	<u>E-mail (click to send)</u>
Advisory	Jaynool Khayrattee	713.664.0130	jayk@matrixstructural.com
Scholarship	Paul Gugenheim	832.309.5584	paul@fiberwrap.com
Membership	Glen Smith	713.664.0130	glensmith@gmail.com
Program			
Student Affairs– TAMU	Stefan Hurlebaus	979.845.9570	shurlebaus@civil.tamu.edu
Student Affairs– Rice U.	Jamie Padgett	713.348.2325	Jamie.Padgett@rice.edu
Student Affairs– U of H	Mina Dawood	713.743.2983	nmdawood@uh.edu
Publicity	Lance Operhall		operhall@gmail.com
Young Engineers	Chris Hill	713.868.1591	chris.hill@cardno.com
Advertising	Chris Hill	713.868.1591	chris.hill@cardno.com
Newsletter Editor	Jennifer Ju	713.868.1591	jennifer.ju@cardno.com
TAMU Student Ch. Pres.	Alejandro Zepeda	979.574.7794	alejandro_zepeda@email.tamu.edu

