



THE STRUCTURAL ENGINEER

Houston Downtown's 609 Main

609 Main's height of 756 feet above street level makes it the tallest building to be built in Houston in the last 30 years. It is a 50-level 1.8 million square foot office building under construction downtown. One million square feet of office space sit on top of fourteen levels of parking, two of which are below grade. The building includes approximately 30,000 square feet of green roofs and a 60-foot high cantilevered crown above level 49. The analysis, design, and construction of the foundation and the overall structural system of this building will be discussed.



Mr. Ford is a Registered Professional Engineer in Texas. He earned his Bachelor of Science in Civil Engineering degree and Master of Civil Engineering degree from Rice University. Wally has over 35 years of experience in the planning and design of structural systems for commercial and institutional buildings. He has had the opportunity to work on a variety of building sizes and types, including high-rises up to 75 stories. Wally has been an employee at Cardno Haynes Whaley since 1998, where he serves as an Executive Vice President. Wally has served as a lecturer for structural courses in the Architecture Department of Rice University for ten years.

MEETING INFO

WHEN:	WHERE:	COST:	RSVP:	UPCOMING MEETINGS
October 15, 2015 6:00 pm Social 6:30 pm Dinner 7:00 pm Program	HESS Engineering and Scientific Society 5430 Westheimer Houston, TX 77056 713.627.2283	Members: \$25.00 Non-members: \$35.00 Student members & Non dinner guests	Click Here to register online. The deadline is 12:00pm, the Tuesday before	November 19, 2015 TBD January 21, 2015 TBD

[CLICK HERE](#) TO REGISTER FOR THIS MEETING

President's Corner

Al Bustamante, PE

Volition is the most powerful word in the English language. This word means the power of choice. The beauty of America is that we have the freedom to make choices every day. You can choose to be happy, you can choose to smile or cry, you can choose to work hard or be lazy, etc. How does this apply to SEAOt members? Simply, we have the power to choose to be involved and improve our chapter and our profession. I'm providing the following list of announcements/initiatives that can make a positive impact in our chapter, but is up to our members to make the choice to participate

1. Sign-up for the State Conference
2. Take advantage of the "Bring a Colleague Program" (bring a colleague who is a PE or EIT and your meeting registration fee + your colleague fee will be waived)
3. Participate in the Young Engineers Fall Event. More information to follow
4. Become a chapter board member for 2016
5. We are giving out two scholarships this year
6. SEAOt Houston/GC Chapter website coming soon!
7. **THE NOVEMBER 19, 2015 MEETING WILL BE HELD DURING LUNCH AT PAPPAS BBQ AT 7007 HWY 59 SOUTH 11:30 THRU 1:30.**

Concrete Repair and Protection

Preservation • Restoration • Repair
Maintenance of Structural Concrete

Renewal and Rehabilitation of Infrastructure
Cost Effective, Time Efficient Solutions to Concrete Problems

Commercial • Industrial
Petrochemical • Marine

EPOXY DESIGN SYSTEMS, INC.
STRUCTURAL CONCRETE REPAIR

www.epoxydesign.com Houston, TX
713.461.8733 frank@epoxydesign.com

Delta Structural Technology, Inc.

Solutions that Make the World Stronger

Composite Fiberwrap Contractors & Engineers
Specializing in Structural Repair & Upgrades of Concrete

Structural Upgrades

Corrosion Repair Flood Mitigation
Blast Mitigation Petrochemical
Commercial Crack Injection
Renovations Medical
Industrial Marine
Retrofits Food

DELTA
Structural Technology, Inc

Repair ▲ Restoration ▲ Strengthening

Ph: 281-821-3006 Fax: 936-539-2118 www.fiberwrap.com

President's Corner (Continued) Al Bustamante, PE

If you have any input or have any questions about our chapter, please don't hesitate contacting me at: al.bustamante@walkerrestoration.com



Leading National Provider for:

Geotechnical Engineering
Construction Materials Testing
Special Inspections
Industrial Hygiene
Environmental Consulting & Management
200+ Offices Nationwide

Contact:

Mariana Moreno

3660 Westchase Drive
Houston, TX 77042
P: (713)343-4482
F: (713)977-1915
www.cardno.com



We create the software
that helps you create everything else.



DESIGN TOOLS FOR STRUCTURAL ENGINEERING
risa.com

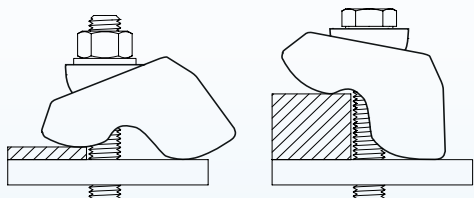


Type AAF Girder Clamp

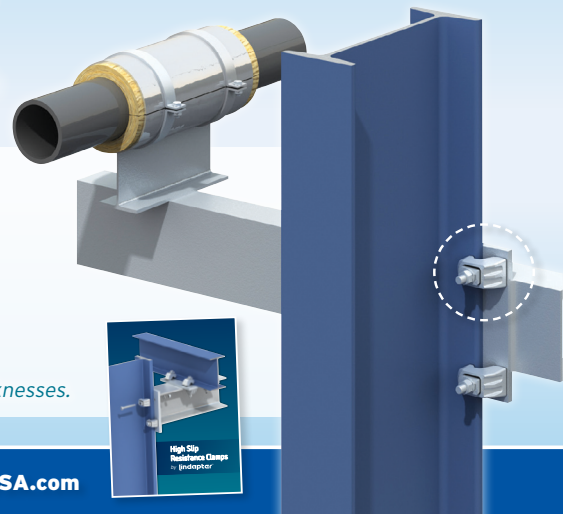
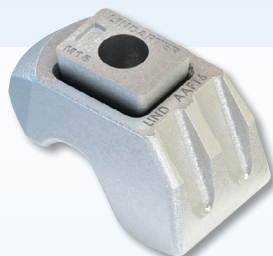
NEW PRODUCT

- ✓ No drilling or welding required
- ✓ Faster installation and reduced costs
- ✓ High slip resistance capacities
- ✓ Independently approved Safe Working Loads
- ✓ Low temperature SG iron

This unique 'all-in-one' adjustable steel clamp offers high slip resistance capability, ease of installation, anti-corrosion protection and performance, even in low temperature environments.



> Innovative 2-part design allows clamp to self-adjust to suit a range of flange thicknesses.



lindapter USA



Get the new brochure at www.LindapterUSA.com or inquiries@LindapterUSA.com

Secretary's Corner

Rick Miles, PE

Here we are in October and I owe apologies as I missed the September newsletter after the summer hiatus. We'll be finishing off the year with a frenzy starting with this week's chapter meeting, The SEAoT state conference in Houston the following week, and our November chapter meeting before taking another break until January. There's a lot to discuss, so let's get started.

All year I've been keeping an eye on the legislative proceedings and providing updates in this column. While renewing my license in September, I was surprised and pleased to find that the \$200 professional fee had been repealed thanks to House Bill 7. I somehow missed this piece of legislation that should be of favorable interest to all of us. The TBPE board letter has an excellent summary of the 84th Texas Legislature in their newsletter at <http://engineers.texas.gov/newsletters/TBPEnewsletter2015.pdf>

Our September 17th meeting featured Mike Smith of Forta Corporation presenting on macro-synthetic fiber reinforcement of concrete (FRC). We were provided some analytical comparisons of bi-linear continuous reinforcement and three-dimensional FRC, along with some project profiles featuring the most common uses of FRC, with some dramatic examples of improved ductility and durability of finished surfaces. I am confident that we will be seeing more of these products in the years to come. Visit <http://www.forta-ferro.com/> to learn more about these products, their benefits, and their applications.

THE LAW OFFICE OF NICHOLAS SOUZA, PLLC



Attorney Nicholas Souza, LL.M.
4801 Woodway Drive Suite 300E
Houston, TX 77056
www.NicholasSouzaLaw.com
Nicholas.Souza@NicholasSouzaLaw.com
Phone: 713-818-9841
Fax: 281-885-8620

Trusts & Estates

- Business Succession Planning
- Estate & Gift Tax Planning
- Wills
- Trusts
- Estate Administration (Probate)

Tax

- Individuals
- Businesses
- Tax Planning
- Tax Controversies
- Federal, State, & Local

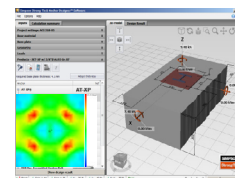
Nicholas Souza is responsible for all content in this advertisement.



WWW.STRONGTIE.COM



Providing a wide range of construction solutions for your Infrastructure, Commercial and Industrial applications



Anchor Designer™ Software
for ACI 318, ETAG, and CSA
Version 2.3

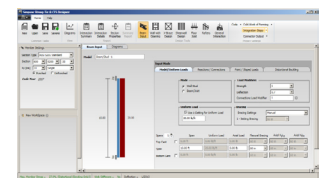
Simpson Strong-Tie® Anchor Designer™ Software is the latest anchorage design tool for structural engineers to satisfy the strength design provisions of ACI 318 Appendix D, CAN/CSA A23.3 Annex D, ETAG 001 Annex C or EOTA TR029 design methodologies.

***NEW FEM — PLATE THICKNESS CALCULATOR ***

Chad Eades
(512) 992-8494

CEades@strongtie.com

Technical Representative



CFS Designer™ Software
for AISI
Version 1.1.0

Simpson Strong-Tie® CFS Designer™ gives cold-formed steel Designers the ability to design CFS stud and track members according to AISI specifications and to analyze complex beam loading and span conditions through an intuitive user interface. The program allows the design of multiple systems within the same job file, and supports connection design for specific Simpson Strong-Tie® curtain wall and bridging connectors.

Secretary's Corner (Continued)

Rick Miles, PE

The SEAOt State Conference visits Houston on October 22-23, 2015 at the Hilton North Hotel. The State Conference will not be back in Houston for another 7 years, so it's a great opportunity to stay local, play some golf on Thursday morning, pick up 12 PDHs, and meet engineers from across the state, along with an extensive list of vendors who make the conference possible,

At the last meeting we suggested that we would try something new for the November meeting by holding it at lunch time. This meeting is tentatively scheduled for November 19. Please stay tuned for more information.

On that matter, we are trying to make a commitment towards improving communication of chapter events, meetings, benefits, and information provided by members. This will likely involve a revamped website, better use of social media, and more effective use of email lists / calendar invites. This takes a good bit of effort and also requires feedback from our members.

Please do not hesitate to contact any of your board members with comments or suggestions – or please volunteer if you have experience with these sorts of things. On that note, annual elections are coming in November and now is the time to nominate folks for board positions. Please forward any nominations to one of your board members.



Secretary's Corner (Continued)

Rick Miles, PE

As always, we're still looking for newsletter content from our members. Do you have a technical article you'd like to share? Please pass on your information to me, and we will work with the publisher to include it with a future newsletter.

Thanks as always for your participation and see you at the October meeting and state conference!

One Company, One Call.

PSI is your best choice for full-service engineering, testing and environmental services. Our experienced staff of professionals has the expertise to meet your project requirements.

- Geotechnical Engineering
- Construction Materials Testing & Engineering
- Non-Destructive Services
- Environmental Consulting
- Industrial Hygiene Services
- Facilities & Roof Consulting
- Specialty Engineering & Testing

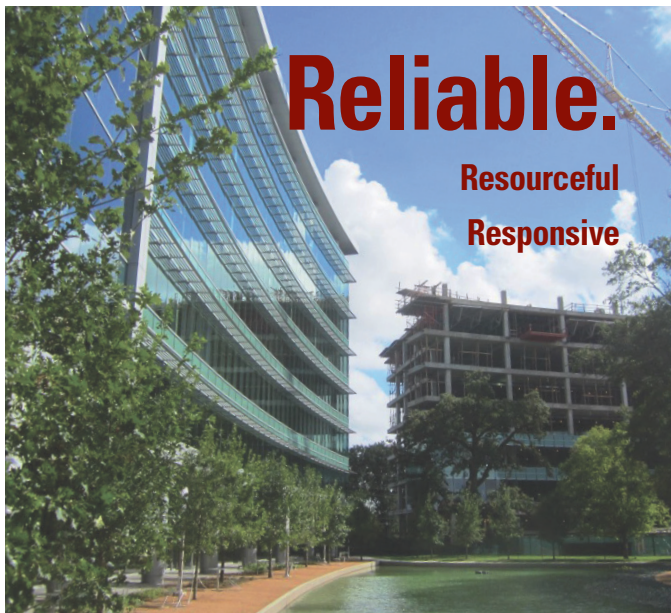
psi Information
To Build On
Engineering • Consulting • Testing

Texas Office Locations:

Austin • Clute • Corpus Christi • El Paso • Ft. Worth
Harker Heights • Harlingen • Houston • La Porte • Longview
McKinney • San Antonio • Spring • Victoria

800.548.7901

www.psiusa.com e-mail: info@psiusa.com



Our top priority – tailor our services to your objectives. We simplify complex issues and provide cost-effective solutions, regardless of the project's size or scope.

Terracon
14 Offices in Texas
(713) 690 8989
terracon.com

GEOTECH ENGINEERING AND TESTING

- o Geotechnical Engineering
- o Environmental Engineering
- o Construction Materials Engineering
- o Forensic Engineering

Areas of Specialization:

- o High Rise and Low Rise Buildings
- o Land Development
- o Petrochemical Complexes
- o Chain Store
- o Transportation
- o Commercial Developments
- o Industrial Facilities
- o Port and Harbor Facilities
- o Aviation
- o Public Infrastructure

Tel: (713) 699-4000

Fax (713) 699-9200

Website: **WWW.GEOTECHENG.COM**

TEXAS • LOUISIANA • NEW MEXICO • OKLAHOMA
Certified as HUB and DBE

Texas A&M Student Chapter President Ashfaq Syed

The Texas A&M University SEAOt Student Chapter had a general meeting on Sep 24th. We hosted Mr. William Williams from the Texas A&M Transportation Institute. He gave us a presentation about his work on a railing that's being considered for installation on Louisiana's Lake Pontchartrain Causeway. At 24 miles, it's the longest bridge in the US. He also showed his work in action through some crash test videos conducted at the TTI Riverside Campus in College Station.



The SEAOt Student Chapter members got the opportunity to visit the facility of Nucor Building Systems located in Terrel, TX as a part of STEEL Day celebrations on Sep 25th. It was a great opportunity for our members to learn about Nucor, its market sector, opportunities, core values and plans for the future. The fabrication facility visit was a unique experience and helped us understand the process involved in the manufacturing of structural shapes and sheet metal sections. Aggies Josh Roberts and Kelechi Emelogu hosted the event and shared their experiences working with Nucor Building Systems.



Tolunay-Wong Engineers, Inc.

- Geotechnical Engineering
- Environmental Consulting
- Construction Materials Testing
- Deep Foundations Testing

Houston Office (Headquarters)

10710 South Sam Houston Parkway West, Suite 100
Houston, TX 77031

Phone: 713-722-7064 Fax: 713-722-0319

Contact: Daniel Wong, Ph.D., P.E.

Email: d Wong@tweinc.com

Other Offices

Beaumont, TX • Corpus Christi, TX • Dallas, TX
La Porte, TX • Baton Rouge, LA

Visit us at: www.tweinc.com



Texas A&M Student Chapter President (Continued)

Ashfaq Syed

We had a great start for October with a presentation by Mr. Larry Rickels and Mr. Tim Stocks of Datum Engineer San Antonio Office on Oct 8th. Larry discussed some design features of San Antonio's Children Museum and Tim shared his experience working on a restoration project transforming a Historic San Antonio structure made wood into a modern office facility.

We are excited about the SEAOt State Conference being organized in Houston this month and we look forward to taking part in the conference.

TSSI
TEXAS STRUCTURAL STEEL INSTITUTE

**SUPPORTING AND PROMOTING THE
STRUCTURAL STEEL INDUSTRY SINCE 1928**

TSSI-TEXAS.ORG



The Houston/Gulf Coast Chapter is hosting SEAoT's annual State Conference this year on October 22nd and 23rd at the Hilton North Houston Hotel. This premier technical conference is a "must attend" for professional Structural Engineers practicing in Texas.

The Conference provides an unparalleled opportunity to learn about new technology, materials and applications from an impressive line up of speakers, meet with vendors and network with other professionals. This year's attendees can expect to earn eleven Professional Development Hours of continued education credit during the Conference.

Visit the [SEAoT website](#) for registration and program information.

2015 Officers and Directors

Office	Name	Phone	E-mail (click to send)
President	Al Bustamante	832.467.2177	Al.Bustamante@walkerrestoration.com
Vice President	Tan Tran	713.868.1591	tan.tran@cardno.com
Secretary	Rick Miles	713.630.7414	RMiles@walterpmoore.com
Treasurer	Jonathan Warshaw	832.467.2177	jwarshaw18@gmail.com
Past President	Steve Wilkerson	832.969.8641	steve.wilkerson@athosengr.com
Chapter Director (14-15)	Larry Ickert	832.244.5403	lickert@excelmidstream.com
Chapter Director (15-16)	Steve Wilkerson	832.969.8641	steve.w@ziasoftware.com
State Director (14-15)	Damon Brotherton	713.702.9973	d-brotherton@sbcglobal.net
State Director (15-16)	Bob Lanser	281.543.0305	boblanser@aol.com
Alternate State Director	Joe Kallaby	281.584.9300	osi-jk@swbell.net

2015 Committee Chairpersons

Committee	Chair	Phone	E-mail (click to send)
Advisory	Jaynool Khayrattee	713.664.0130	jayk@matrixstructural.com
Scholarship	Paul Gugenheim	832.309.5584	paul@fiberwrap.com
Membership Program	Glen Smith	713.664.0130	glensmith@gmail.com
Student Affairs– TAMU	Stefan Hurlebaus	979.845.9570	shurlebaus@civil.tamu.edu
Student Affairs– Rice U.	Jamie Padgett	713.348.2325	Jamie.Padgett@rice.edu
Student Affairs– U of H	Mina Dawood	713.743.2983	nmdawood@uh.edu
Publicity	Lance Operhall		operhall@gmail.com
Young Engineers	Chris Hill	713.868.1591	chris.hill@cardno.com
Advertising	Chris Hill	713.868.1591	chris.hill@cardno.com
Newsletter Editor	Jennifer Ju	713.868.1591	jennifer.ju@cardno.com
TAMU Student Ch. Pres.	Ashfaq Syed	979.985.0603	asyed2014@tamu.edu